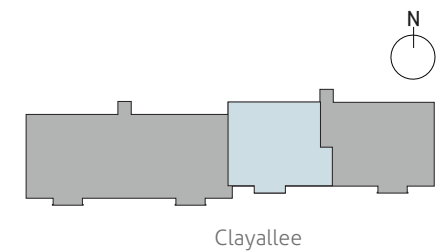
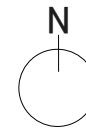
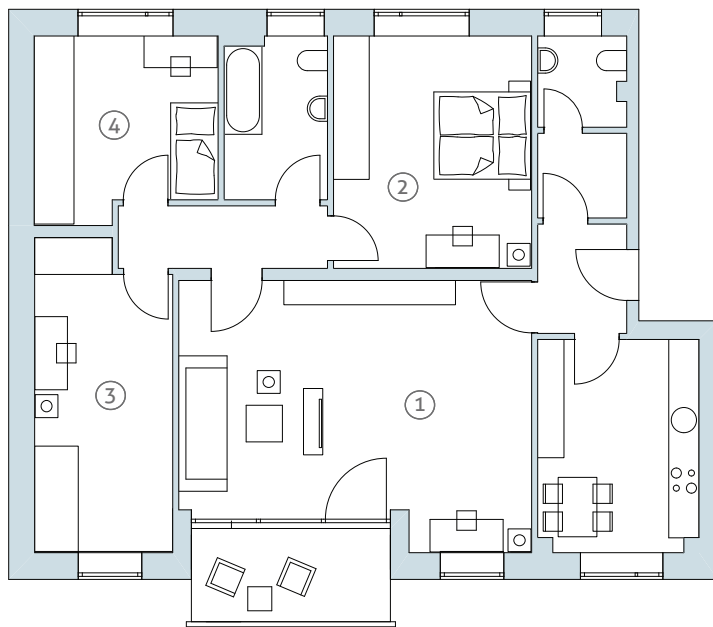


4-ZIMMER-WOHNUNG / 4-ROOM-APARTMENT

Clayallee 230, 2.OG, WOHNUNG 42 / 2ND FLOOR, APARTMENT 42



① Wohnzimmer / Living room	34,65 m ²	Vorraum / Anteroom	2,97 m ²
② Schlafzimmer / Bedroom	18,12 m ²	Flur 1 / Hall 1	5,15 m ²
③ Arbeitszimmer / Workroom	16,24 m ²	Flur 2 / Hall 2	3,83 m ²
④ Kinderzimmer / Children's bedroom	12,65 m ²	Balkon / Balcony (50%)	3,65 m ²
Küche / Kitchen	13,36 m ²		
Bad / Bathroom	6,50 m ²		
WC / WC	3,12 m ²		
		GESAMTFLÄCHE	120,24 m²
		Total living space	