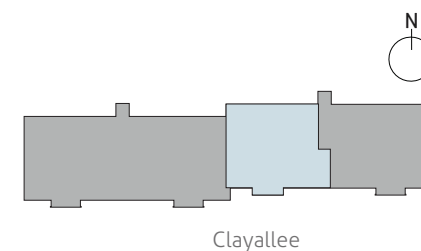
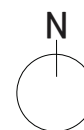
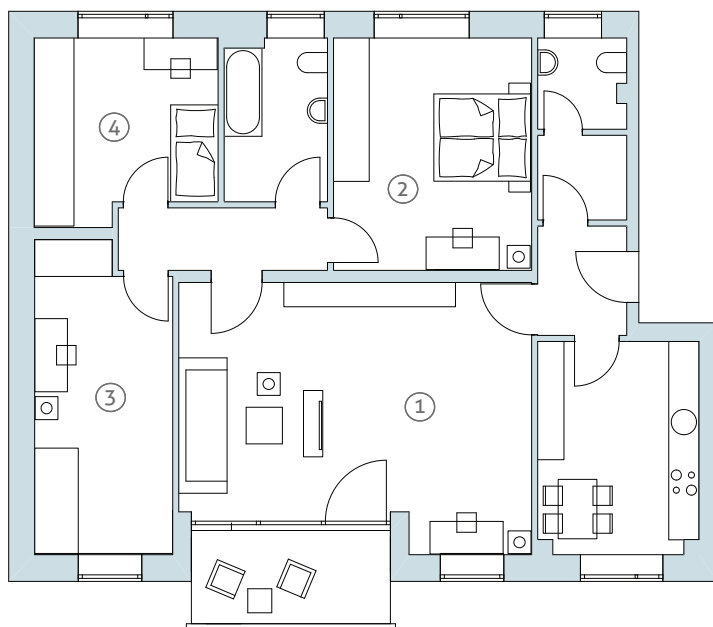


4-ZIMMER-WOHNUNG / 4-ROOM-APARTMENT

Clayallee 230, 1.OG, WOHNUNG 40 / 1ST FLOOR, APARTMENT 40



① Wohnzimmer / Living room	34,65 m ²
② Schlafzimmer / Bedroom	18,12 m ²
③ Arbeitszimmer / Workroom	16,24 m ²
④ Kinderzimmer / Children's bedroom	12,65 m ²
Küche / Kitchen	13,36 m ²
Bad / Bathroom	6,50 m ²
WC / WC	3,12 m ²

Vorraum / Anteroom	2,97 m ²
Flur 1 / Hall 1	5,15 m ²
Flur 2 / Hall 2	3,83 m ²
Balkon / Balcony (50%)	3,65 m ²

GESAMTFLÄCHE 120,24 m²
Total living space