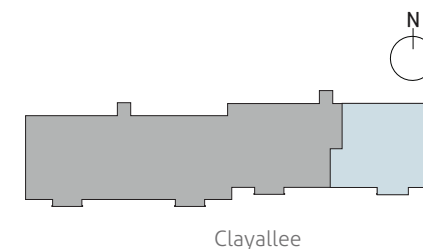
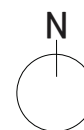
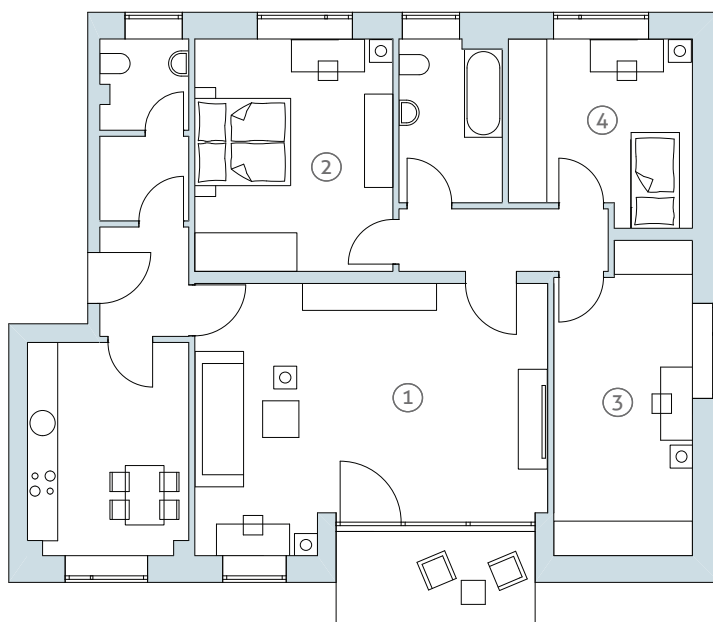


## 4-ZIMMER-WOHNUNG / 4-ROOM-APARTMENT

Clayallee 230, 1.OG, WOHNUNG 39 / 1ST FLOOR, APARTMENT 39



① Wohnzimmer / Living room	34,65 m <sup>2</sup>
② Schlafzimmer / Bedroom	18,12 m <sup>2</sup>
③ Arbeitszimmer / Workroom	16,32 m <sup>2</sup>
④ Kinderzimmer / Children's bedroom	12,65 m <sup>2</sup>
Küche / Kitchen	13,36 m <sup>2</sup>
Bad / Bathroom	6,50 m <sup>2</sup>
WC / WC	3,11 m <sup>2</sup>

Vorraum / Anteroom	2,96 m <sup>2</sup>
Flur 1 / Hall 1	5,15 m <sup>2</sup>
Flur 2 / Hall 2	3,83 m <sup>2</sup>
Balkon / Balcony (50%)	3,65 m <sup>2</sup>

**GESAMTFLÄCHE** 120,30 m<sup>2</sup>  
Total living space